

# **ICC: Facilitating Affordable Access to Effective Healthcare through Regional Collaboration**

**Paul Gionfriddo**

**Executive Director**

**August 2004**



[pgionfriddo@icc-centex.org](mailto:pgionfriddo@icc-centex.org)

# Organization of Safety Net Providers

- Formation of Indigent Care Collaboration (I-Care) in the late 1990s.
- Creation of a Texas Uniform Unincorporated Nonprofit Association (TUUNA).
- Qualification of TUUNA as 501(c)(3) organization under IRS.
- CAP/HCAP, Ascension Health, and RWJ Grants to Plan and Implement strategies (2000).

# Central Texas Challenges

- ☞ 250,000 uninsured.
- ☞ Rapidly growing population of 1.2 million.
- ☞ Large immigrant/undocumented population.
- ☞ Urban/Rural Mix.
- ☞ Safety Net stretched thin.

# ICC Members: Charter (Travis County) Plus Newer (Hays and Williamson)

- Seton Health Care (DSH, plus hospitals and clinics)
- St David's System
- Central Texas Medical Center (1999)
- Travis County Medical Society (2002)
- Round Rock Clinic (2004)
- Georgetown Clinic (2004)
- Johns Hospital (2004)
- COA Community Care Services Dept.
- ATC HHS Dept.
- ATC MHMR Center
- Williamson CCHD (1999)
- People's Comm. Clinic
- Volunteer Clinic
- El Buen Samaritano
- Planned Parenthood

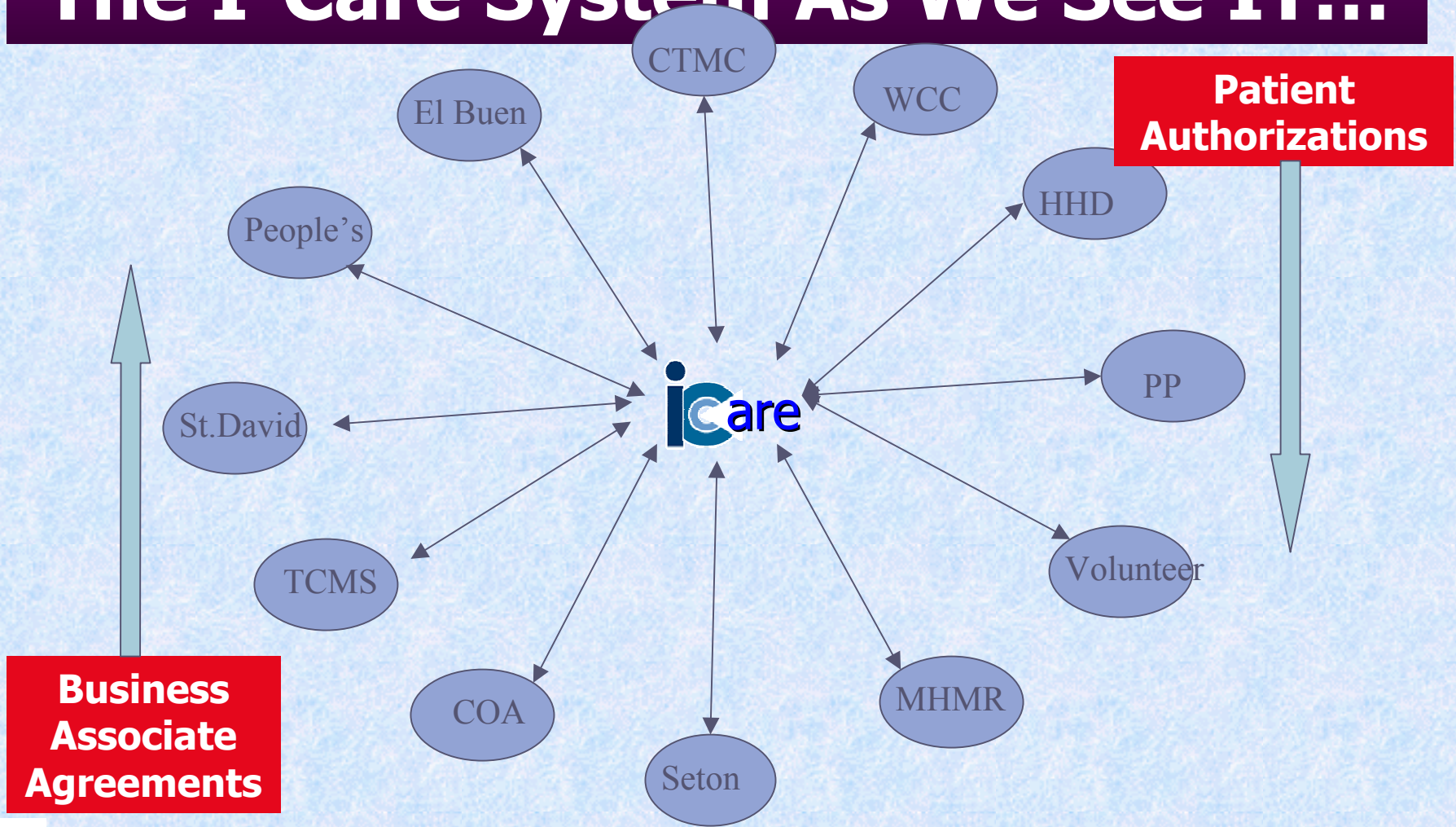
# Collaborative Strategic Planning: 15-year Consensus Strategic Plan (2000-2001)

- Obtain more dedicated funds to provide healthcare to more underserved people (Priority #1)
- Ensure a full range of services (#2)
- Explicitly develop the regional partnership addressing both rural and urban needs of the uninsured (#3)
- Awareness Program (#8)
- Expand Physician Involvement (#4)
- Improving/ completing inpatient/ outpatient continuum of care coordination (#5)
- Establish regional web-based information system (#6)
- Expand CHIP/Medicaid enrollment (#7)
- Business Venture-Pharmacy (#9)

# Implementation of Common Initiatives

- ☛ Demonstrate that providers are doing all they can...
  - Expansions of Safety Net and Disease Management (2001+).
  - Common Eligibility – Medicaider/Case Tracker (2002+).
  - Shared Health Record – I-Care (2002+).
  - Pharmacy – MPACT (2003+).
  - Promotion and implementation of Hospital District (2003+) (55%-45% voter approval in May 2004).

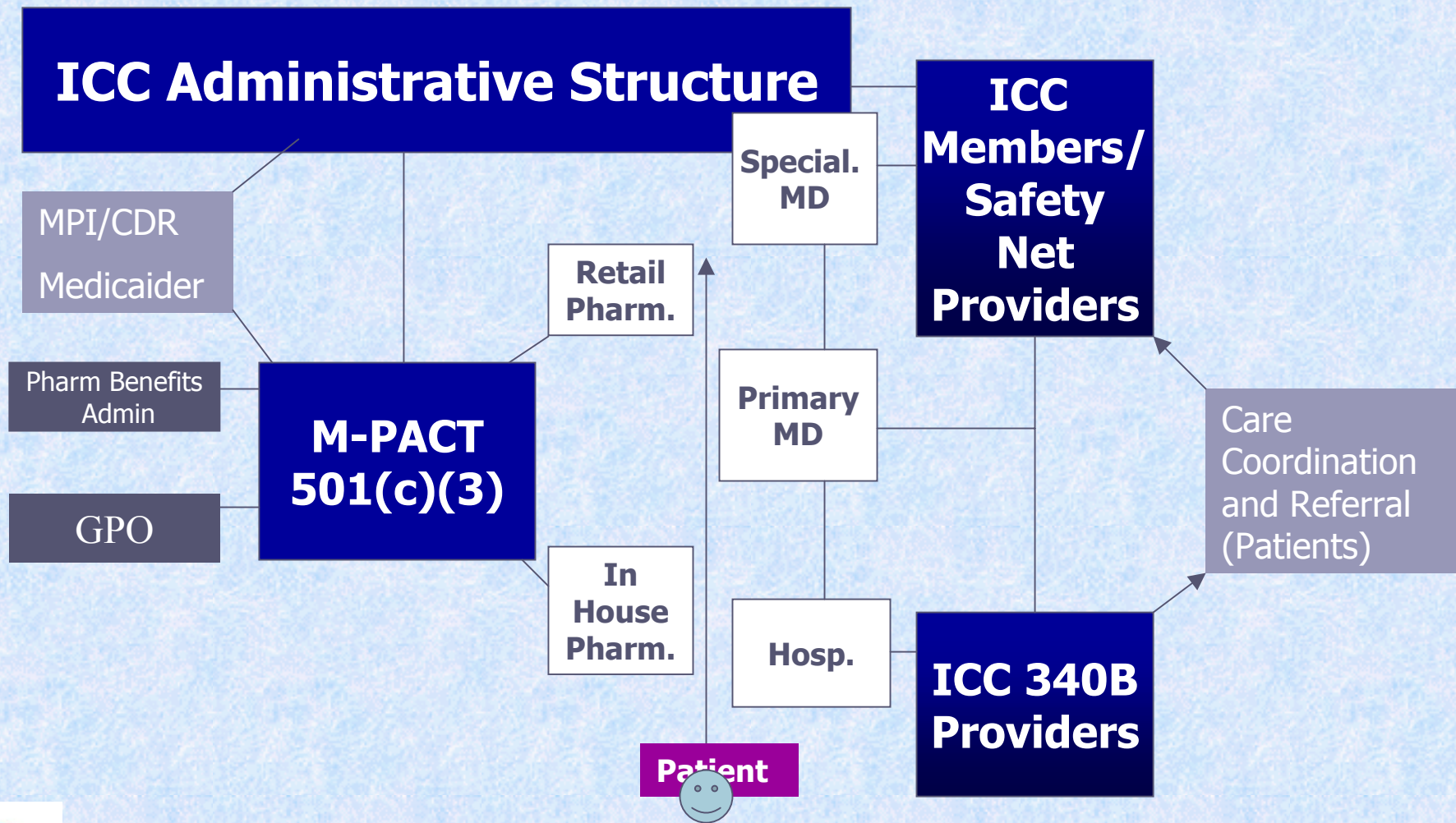
# The I-Care System As We See IT...



# Central TX Expansions of Safety Net System of Care

- 2,849 patients enrolled in 2001 in expanded Austin/TC Medical Assistance Program/FQHC initiative under ICC umbrella.
- 4,500+ patients enrolled in 2001 in Seton managed charity care initiative under ICC umbrella.
- Georgetown Community Clinic started, Round Rock Clinic expanded, both join ICC.
- Project Access formed with Travis County Medical Society, over 700 physicians volunteer, over 300 patients enrolled (8/04). TCMS joins ICC.
- Caldwell County "ICC" gets planning grant in 2004; plans to join ICC initiatives in 2005.

# I-Care/M-PACT Network Care Model



# The Future of the ICC

- Maintain and build on past successes with Medicaid, I-Care, and pharmacy.
- Work with members to identify new opportunities for collaborative ventures.
- Work closely with Hospital District and other local/regional officials to offer data, research, evaluation, and other services.
- Move toward greater presence and ownership throughout the region; and promote/offer regional solutions to health and mental health care problems and issues.

# Conclusion

**Thank you  
for your  
time and  
attention!**

