

Common Eligibility Tools in Central Texas Increasing Funding for Safety Net Care

Paul Gionfriddo

Executive Director

August 2004



pgionfriddo@icc-centex.org

Common Eligibility:

Medicaider/Case Tracker

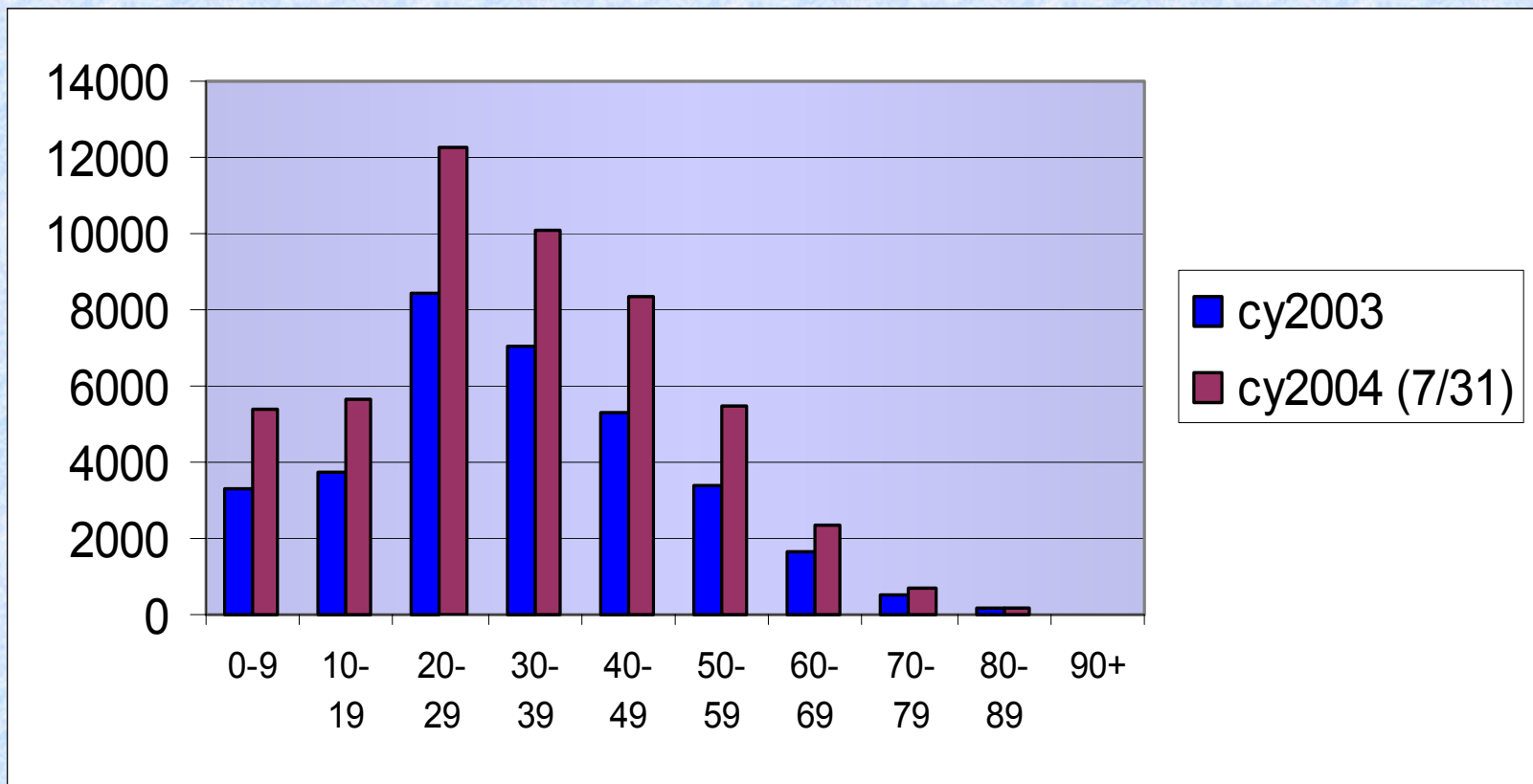
Medicaider/Case Tracker

- Common Eligibility Tool, Screens for Medical Assistance and Charitable Programs.
- In use since August 2002.
- 90,783 interviews of uninsured people completed by August 15, 2004.
- Average: 6,000+ screens per month.
- Average screening time: 3.1 minutes.

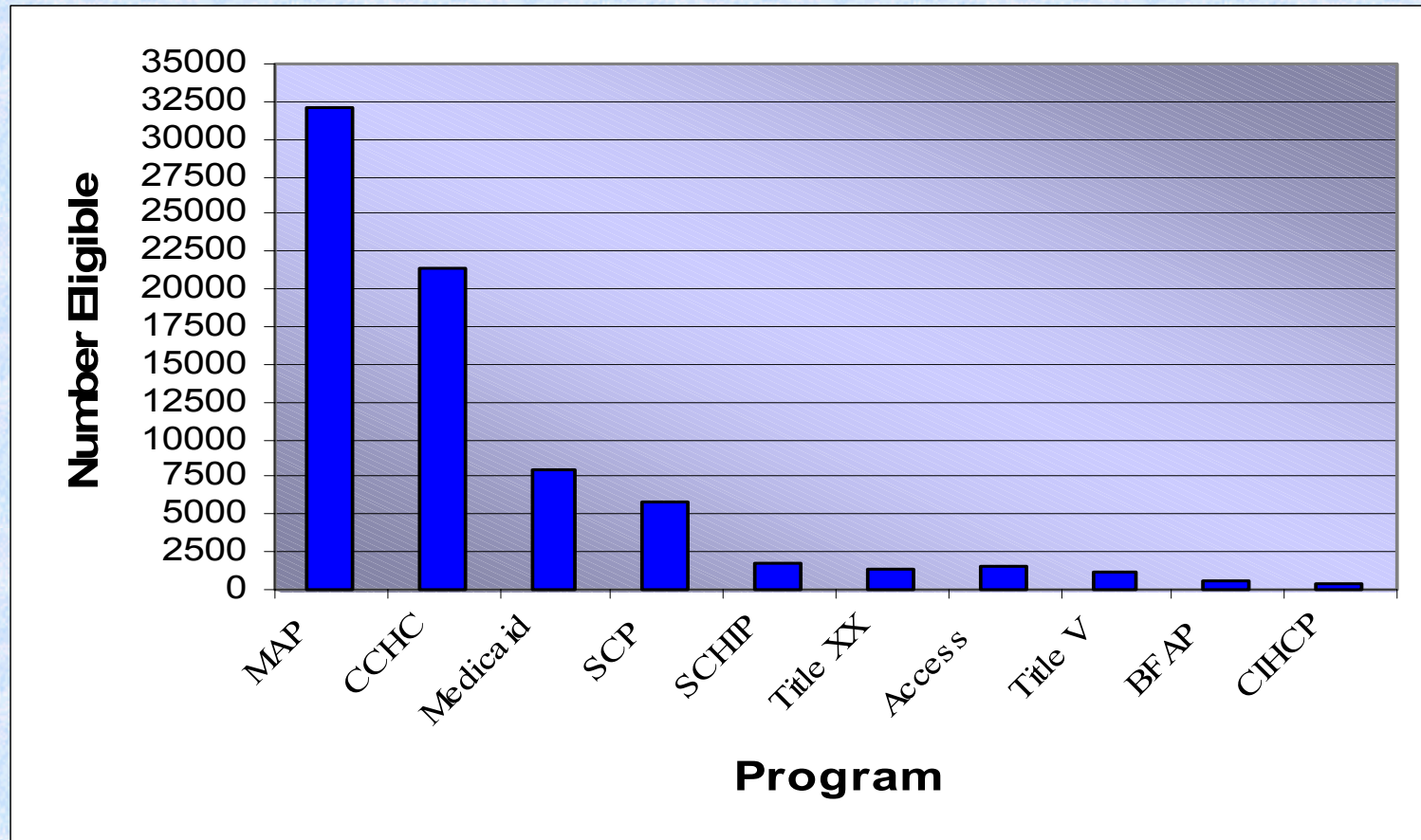
Medicaider/Case Tracker Process

- Uninsured patient is screened anonymously by provider or service agency at the time of encounter.
- After screening, Medicaid/SCHIP eligible patients are asked to provide name and phone number to receive application assistance.
- Medicaider information is saved in Case Tracker.
- Insure-a-Kid outreach worker logs on to Case Tracker from central location and follows up with patient.

Uninsured Patients Screened by Age



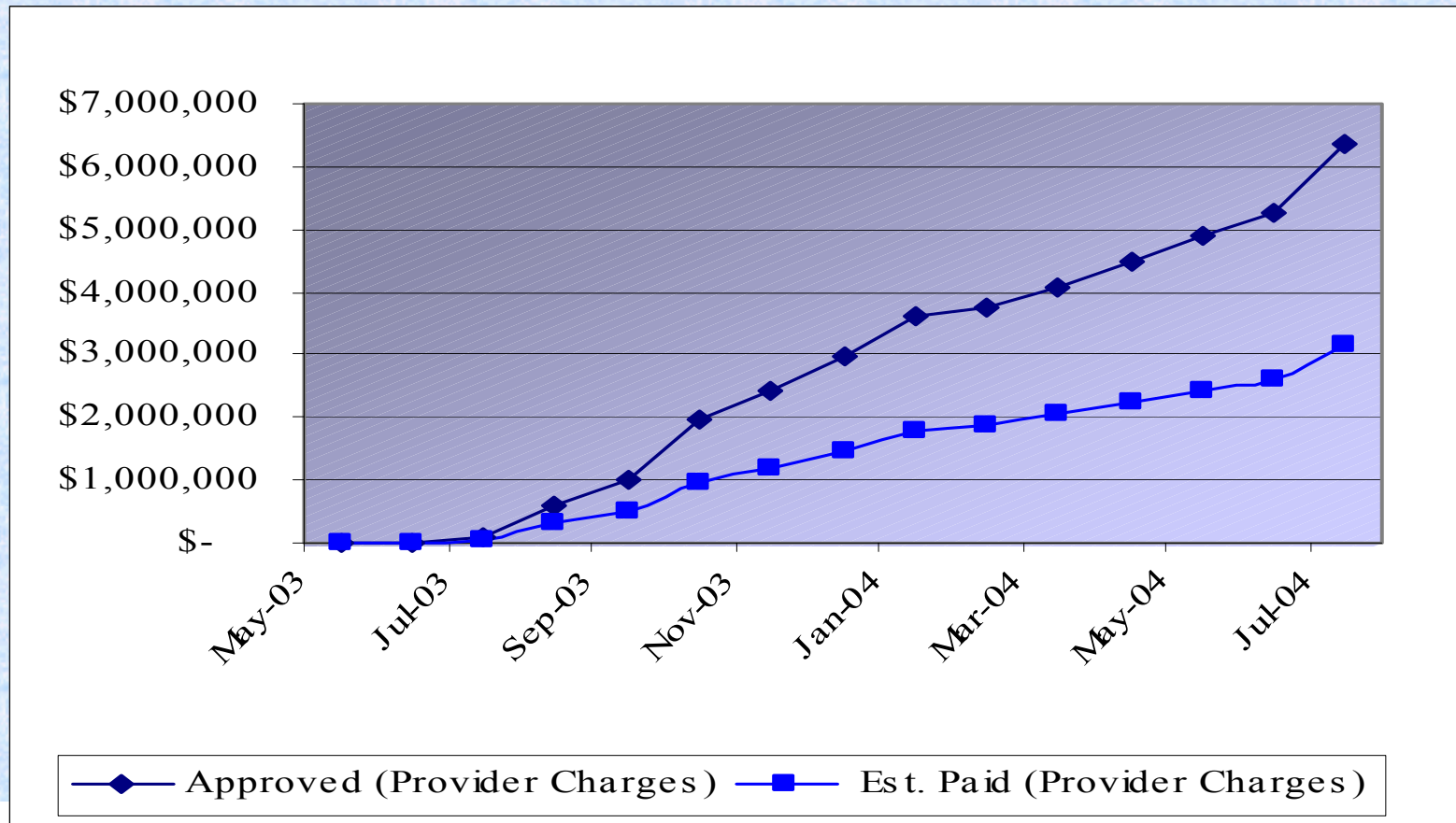
Eligibility of Uninsured Patients Screened through July 2004



Impact: Medicaider and Case Tracker

- As of June 2004, 1522 people have been enrolled in Medicaid, SCHIP, another funding program, or private insurance as a result of ICC use of Medicaider/Case Tracker.
- Rate of enrollment is in excess of 100 per month.

Safety Net Provider Benefits from Medicaid, est. through July 2004



PAP Expansion

- ☞ Integration of Patient Pharmaceutical Assistance Programs (PAPs) via link to MedData Systems into Medicaider tool.
- ☞ Screening simultaneous with screening for all other programs.
- ☞ Program forms printed out, signed, and processed at time of encounter.

ICC Member Use of Pharmaceutical Assistance Programs

- ☞ Nine sites have begun using Medicaider link to MedData to access PAPs as of August 2004.
- ☞ First 65 patients screened and linked to PAPs in July, 2004.